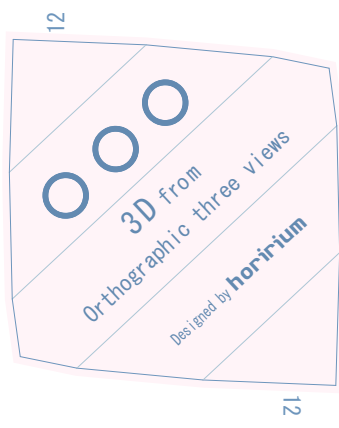
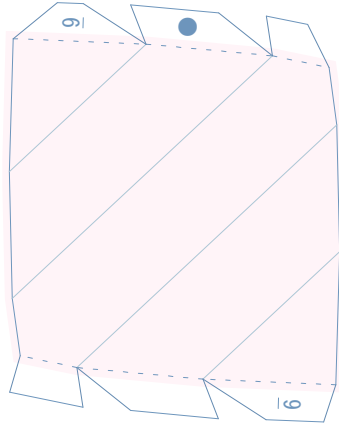
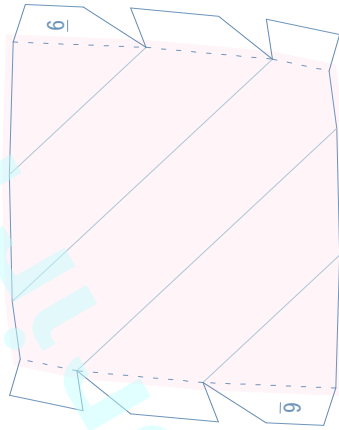
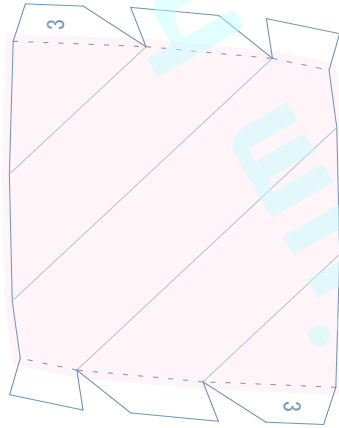
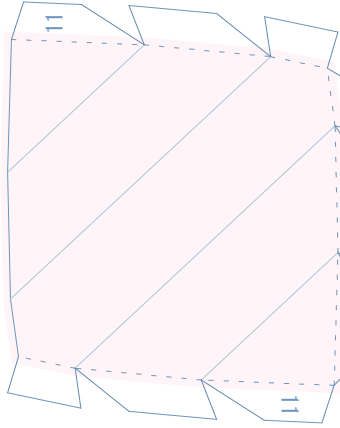
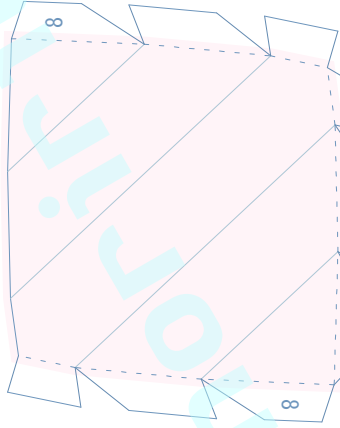
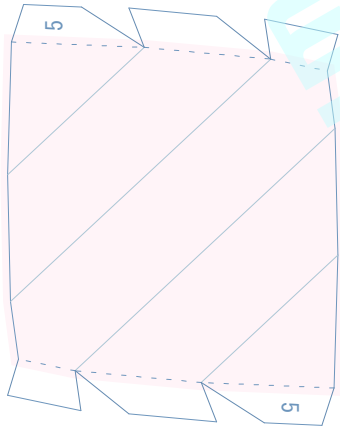
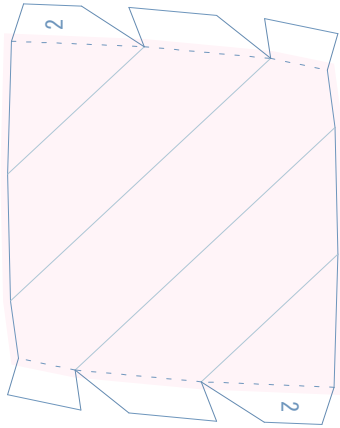
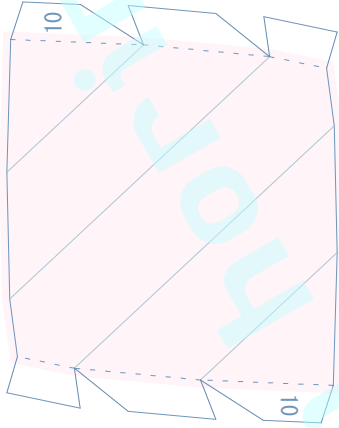
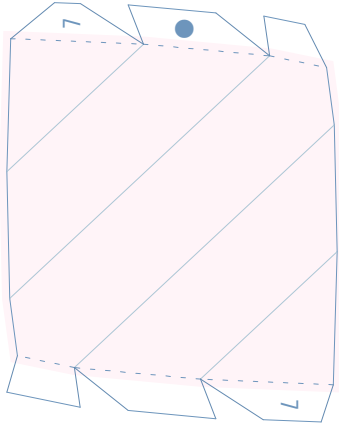
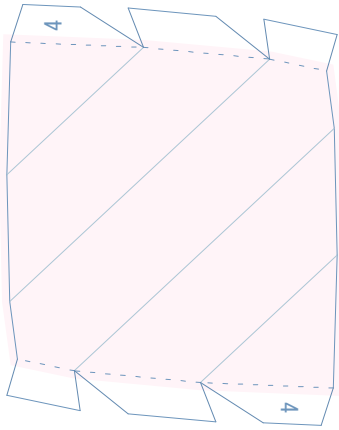
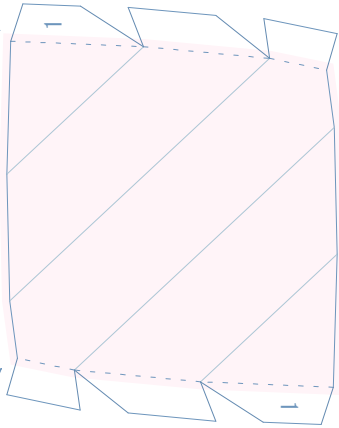


角B  
角A



papercraft



3D from  
Orthographic three views  
Designed by **horirium**

切る



山折り



貼り合せの目安線  
(軽く山折りのスジを  
付けると作り易い)



※ 1番から順に半時計回りに角Aどうしが4つ、  
角Bどうしが3つ集まるように貼り合わせていきます。  
最後に●部分の糊しろが4つ同じ所に残るようにします。  
そこに1 2番を貼り付けて完成です。